



KRE/AID Management Zone Pilot Study

Steering Committee Meeting

Dinuba Parks & Recreation Center

June 13, 2019



MEETING AGENDA

- Introductions
- Status of State Board Approval of Basin Plan Amendment/
Nitrate Control Program Adoption Update
- Formalization of Steering Committee
- Early Action Plan – Preliminary Draft for Discussion
 - Identification of Potentially Affected Residents
 - Temporary Water Provisions
 - Implementation Schedule
 - Preliminary Cost Assessment
- Brief Project Status Updates
- Other Business
- Schedule Next Meeting



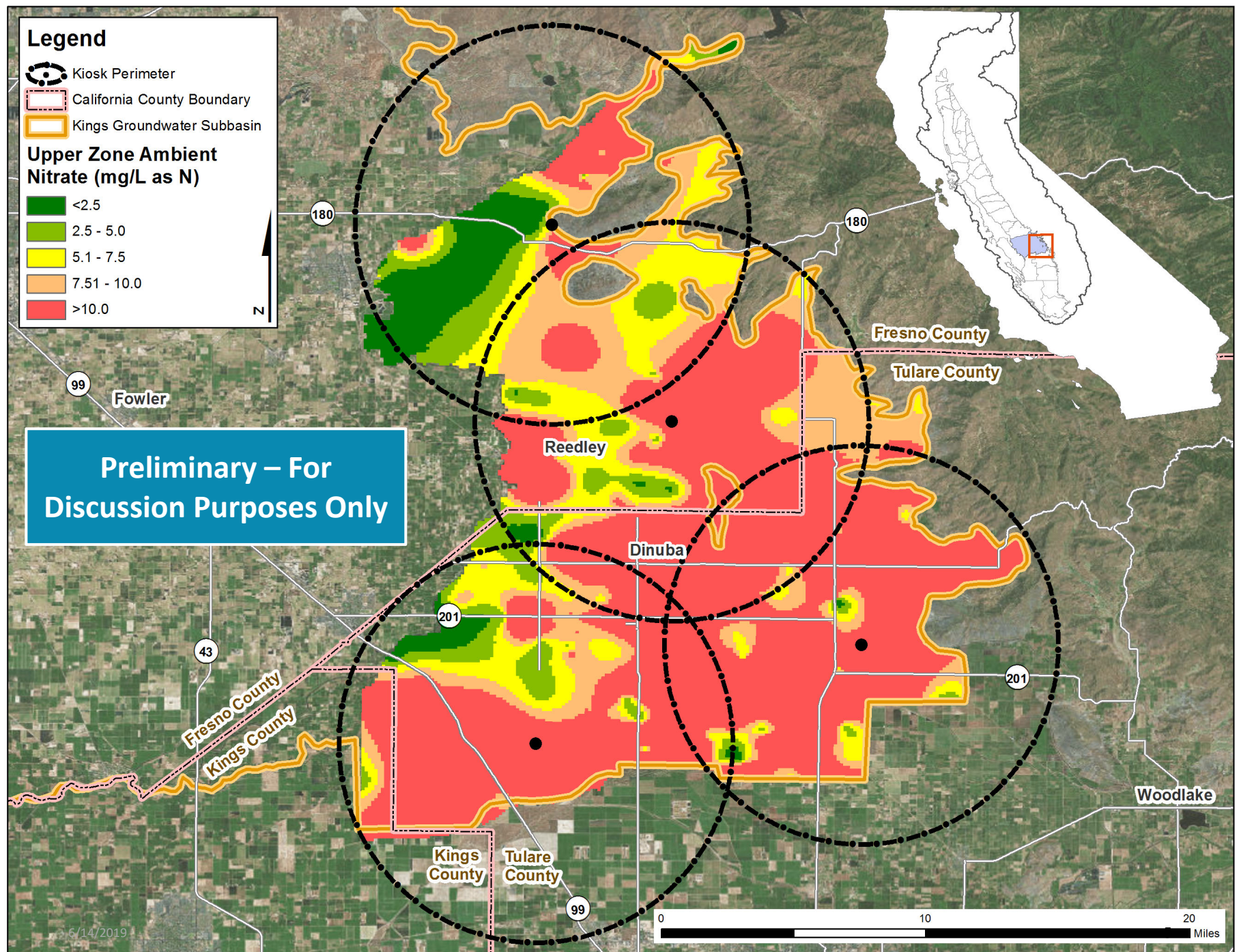
FORMALIZATION OF THE STEERING COMMITTEE

- Process to Establish Leadership and Roles
- Consultant Support



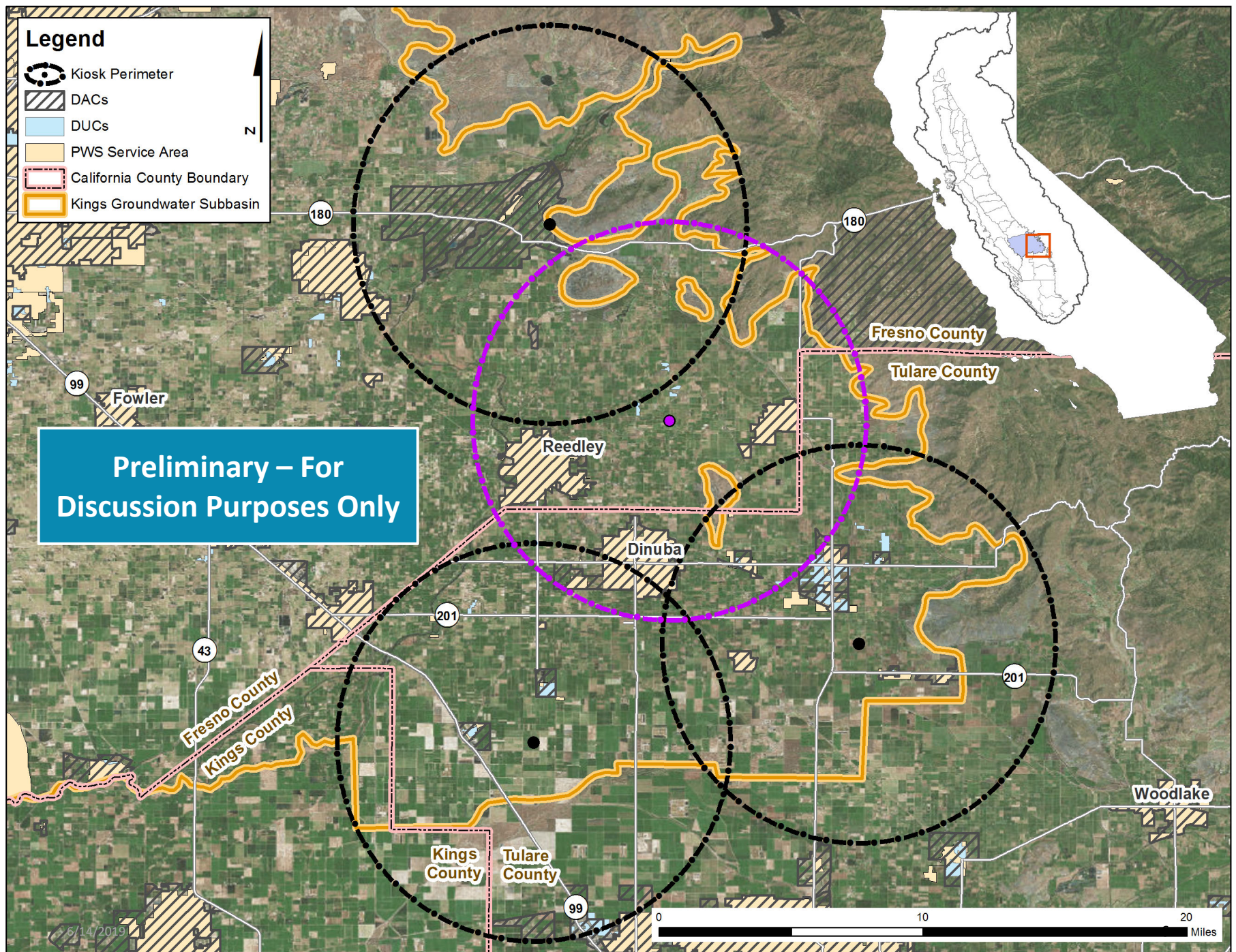
EARLY ACTION PLAN

- Preliminary Draft – June 11, 2019



Source: Esri, CA DWR, CA SWRCB

Maps created by GEI Consultants, Inc. on behalf of CV-SALTS and the Central Valley Salinity Coalition (June 2019)



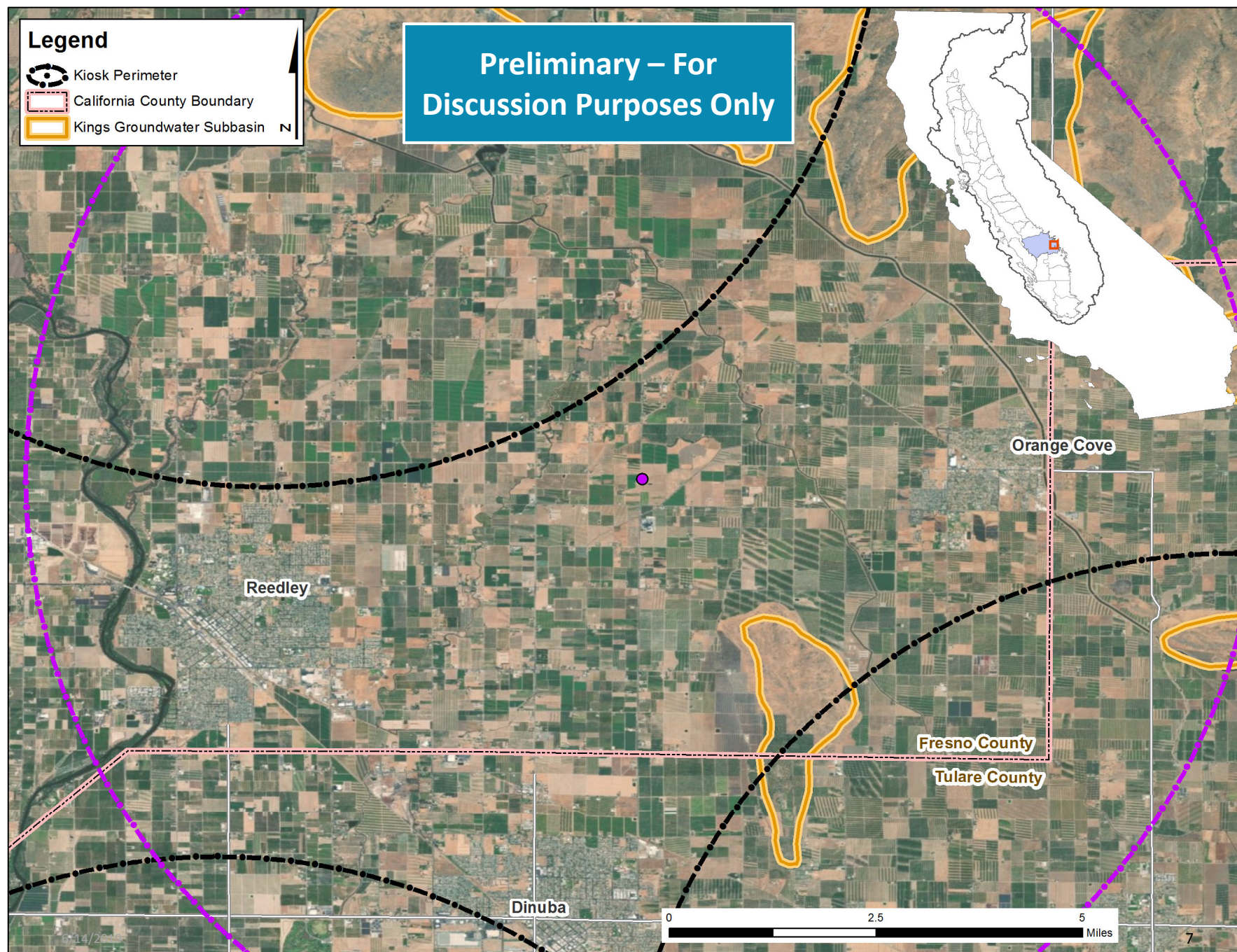
Source: Esri, CA DWR, CA SWRCB

Maps created by GEI Consultants, Inc. on behalf of CV-SALTS and the Central Valley Salinity Coalition (June 2019)

Legend

-  Kiosk Perimeter
-  California County Boundary
-  Kings Groundwater Subbasin

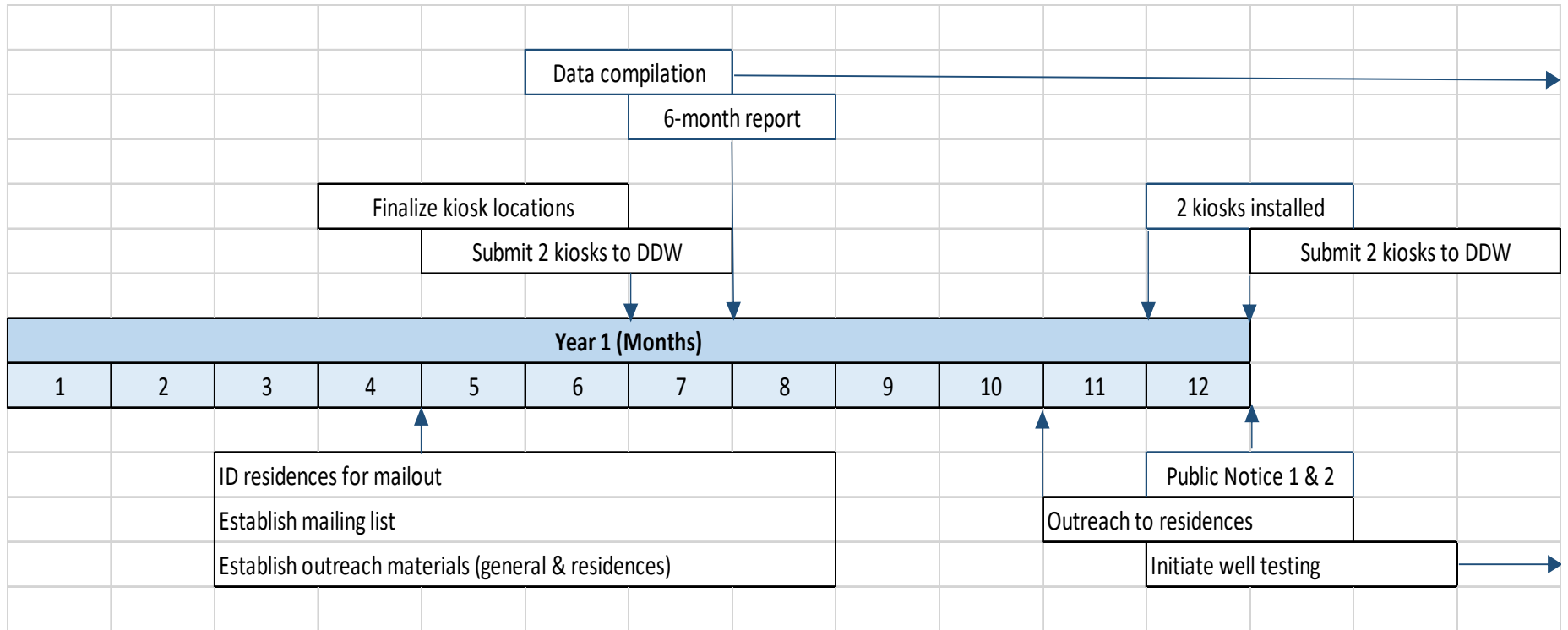
Preliminary – For
Discussion Purposes Only



Source: Esri, CA DWR, CA SWRCB

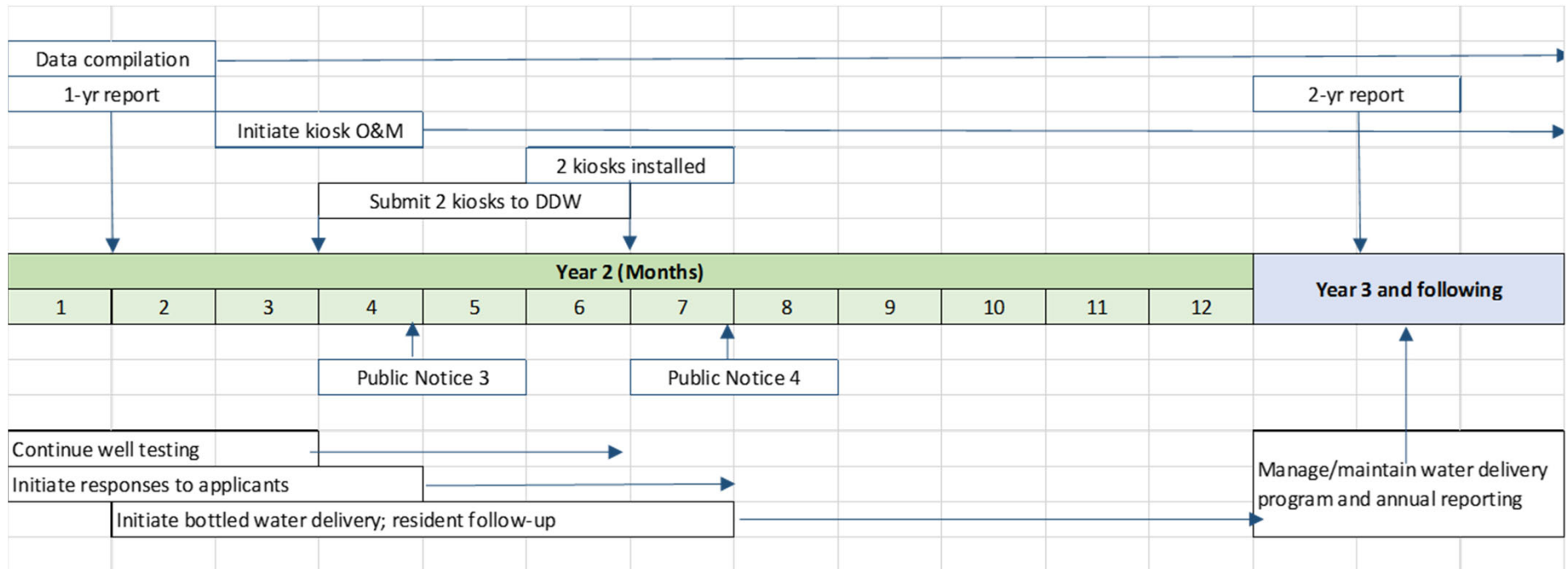
Maps created by GEI Consultants, Inc. on behalf of CV-SALTS and the Central Valley Salinity Coalition (June 2019)

EARLY ACTION PLAN – YEAR 1 SCHEDULE



Preliminary – For Discussion Purposes Only

EARLY ACTION PLAN – YEAR 2 AND FOLLOWING SCHEDULE



Preliminary – For Discussion Purposes Only

Period	Key Activities	Estimated Cost
Startup – First Six Months	<ul style="list-style-type: none"> Identify Residents Outreach Materials Finalize Kiosk Locations Submit 2 Kiosks to DDW Reporting 	\$126,000
Second Six Months	<ul style="list-style-type: none"> Submit 2 Kiosks to DDW Install 2 Kiosks Alternative Water Delivery Program Implementation <ul style="list-style-type: none"> Mailout Water Testing (as needed) Initiate Program Reporting 	\$141,300
Year 2	<ul style="list-style-type: none"> Install 2 Kiosks Alternative Water Delivery Program Implementation <ul style="list-style-type: none"> Water Testing (as needed) Ramp up to full Program implementation Reporting 	\$235,450
Annual Cost Post-Year 2	<ul style="list-style-type: none"> Kiosk Management (O&M) Manage AWD Implementation Reporting 	\$190,560

ALTERNATIVE WATER DELIVERY COSTS – BOTTLED-WATER DELIVERY

Household Size	No. of Bottles per Delivery	No. of Bottles per Month (2 deliveries /month)	Cost per Month (\$9.50/bottle)*
1-3	6	12	\$114
4-6	8	16	\$152
7+	10	20	\$190

* Delivery charge (~4%); \$6 credit for each bottle returned for recycling

- Per the above table (based on Salinas), assumed the following:
 - 14 bottles/month (3-4/household on average)
 - Delivery charge of 5%
 - \$6 credit applied to all delivered bottles
- Other parameters:
 - No. of potential residences: ~2,000 at risk domestic wells identified
 - Participation rate based on Salinas bottled-water program experience:
 - 15% of residences contacted applied for delivery (used 20% for KRE/AID)
 - 47% tested above MCL (used 50% for KRE/AID)

ALTERNATIVE WATER DELIVERY COSTS – POINT OF USE SYSTEMS

- Several processes considered effective for removal of nitrate: reverse osmosis (RO), ion exchange, and electrodialysis. Estimated costs for under-the-sink RO unit:
 - Example 1 (Self-Help Enterprises)
 - Equipment and installation is about \$800
 - Annual maintenance costs \$237
 - Example 2 (Dr. Hoon Hyung, LG NanoH2O, Inc.):
 - Equipment and installation is about \$600 to \$700.
 - Annual maintenance cost is about \$100
- Other administrative costs to manage the program not included above



PROJECT STATUS UPDATES

- Groundwater Assessment
- Outreach to Permitted Dischargers



FINAL AGENDA ITEMS

- Other Business
- Next Meeting – Proposed: July 30